

# Positive Wellness North Island

North Island Liver Services

North Island HIV Services

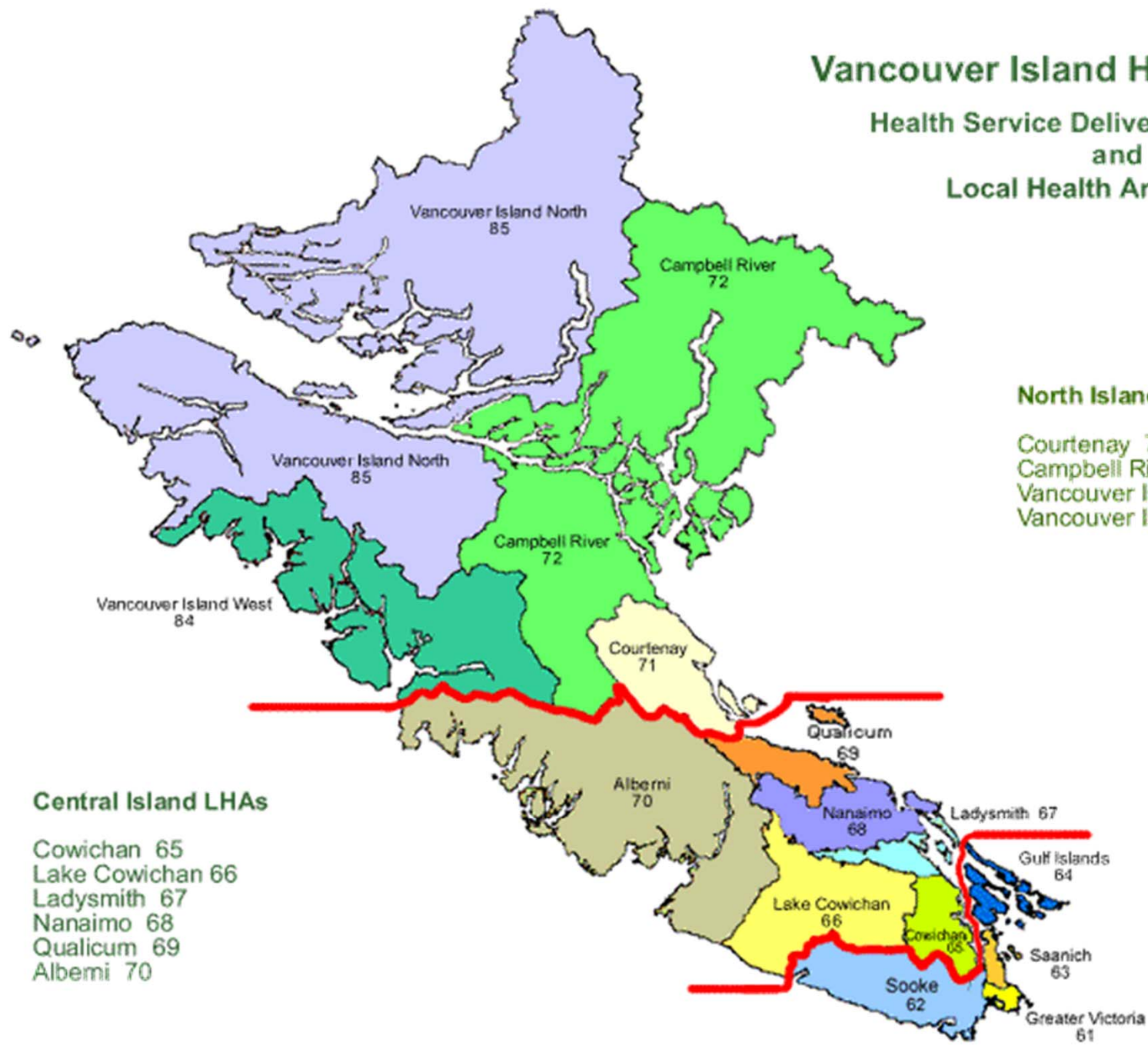


# PWNI services the Northern part of Vancouver Island



# Vancouver Island Health Authority

Health Service Delivery Areas (HSDA)  
and  
Local Health Areas (LHA)



## Central Island LHAs

Cowichan 65  
Lake Cowichan 66  
Ladysmith 67  
Nanaimo 68  
Qualicum 69  
Alberni 70

## North Island LHAs

Courtenay 71  
Campbell River 72  
Vancouver Island West 84  
Vancouver Island North 85

## South Island LHAs

Greater Victoria 61  
Sooke 62  
Saanich 63  
Gulf Islands 64

# Benefits & challenges of our location



Vast...

Beautiful...

Wild...

Remote...

# Benefits

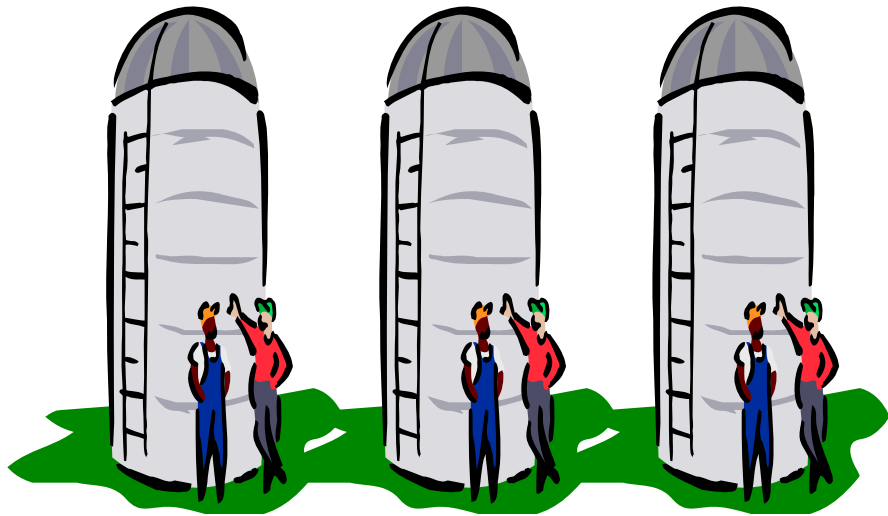


# Benefits



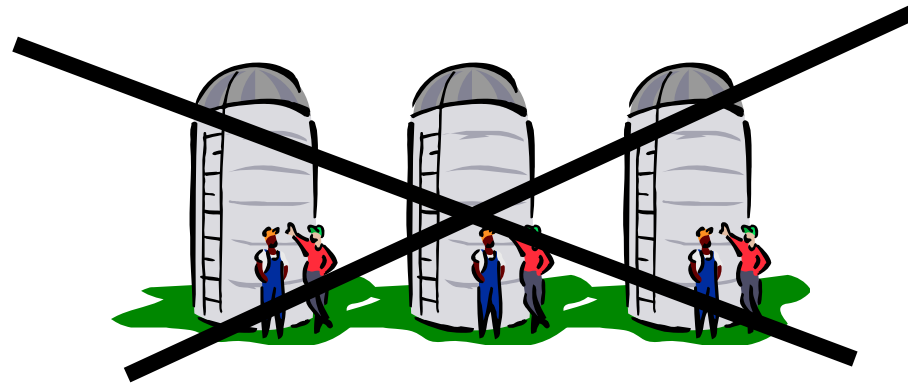
# Benefits

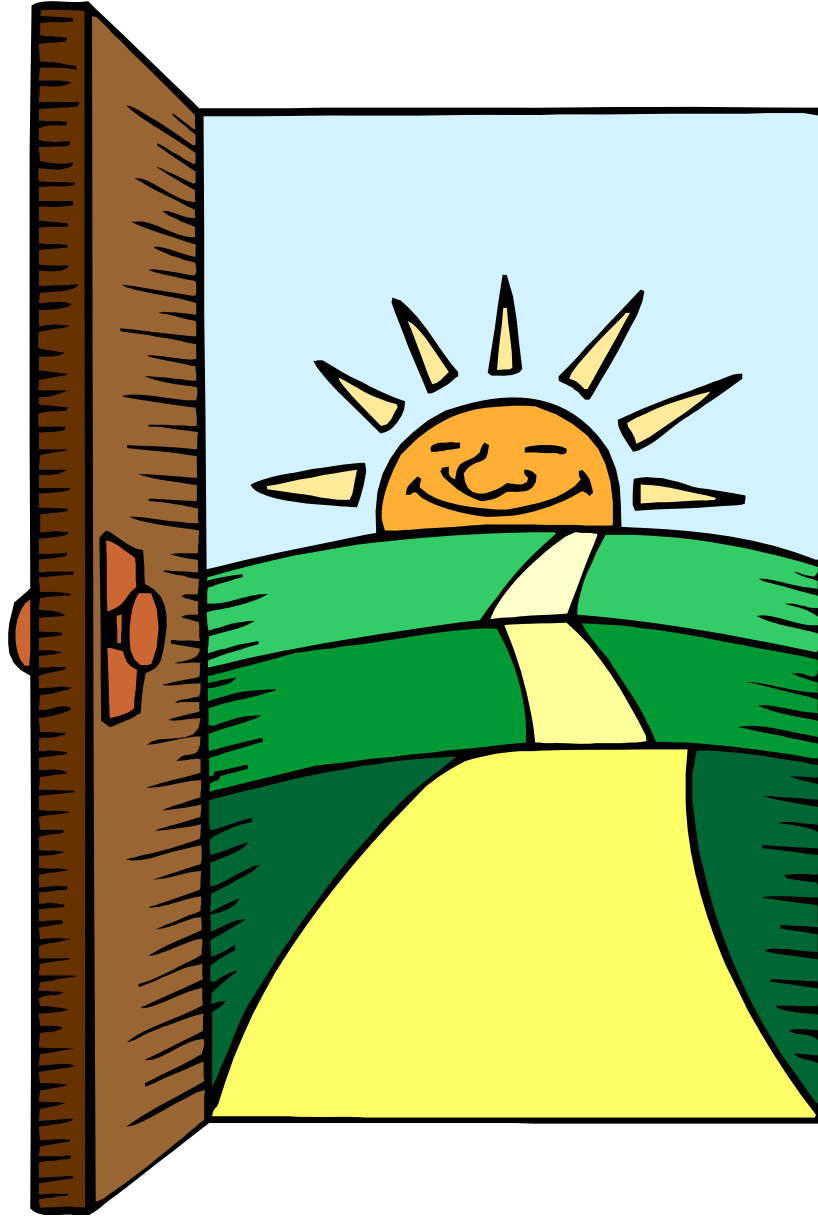




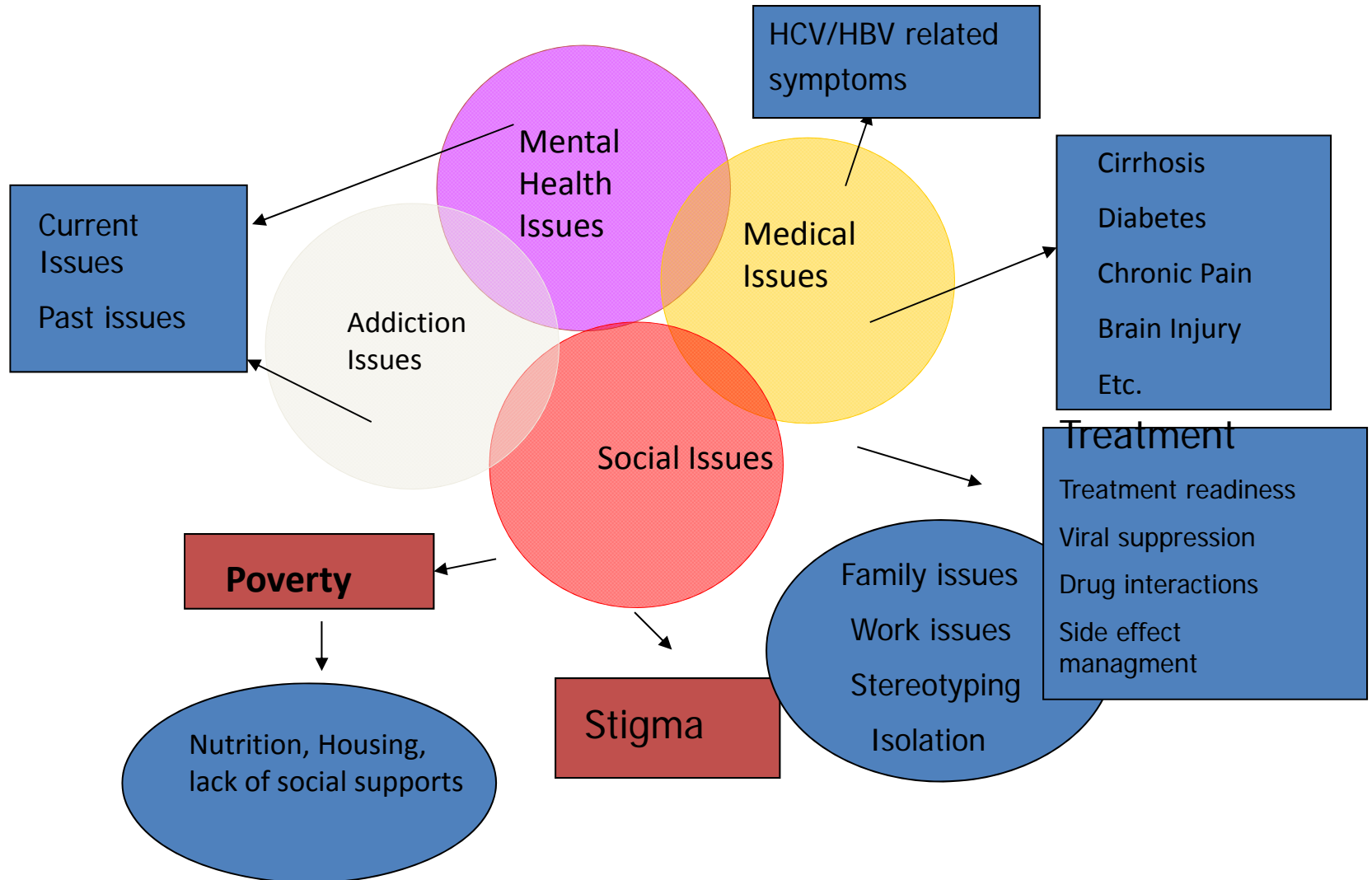


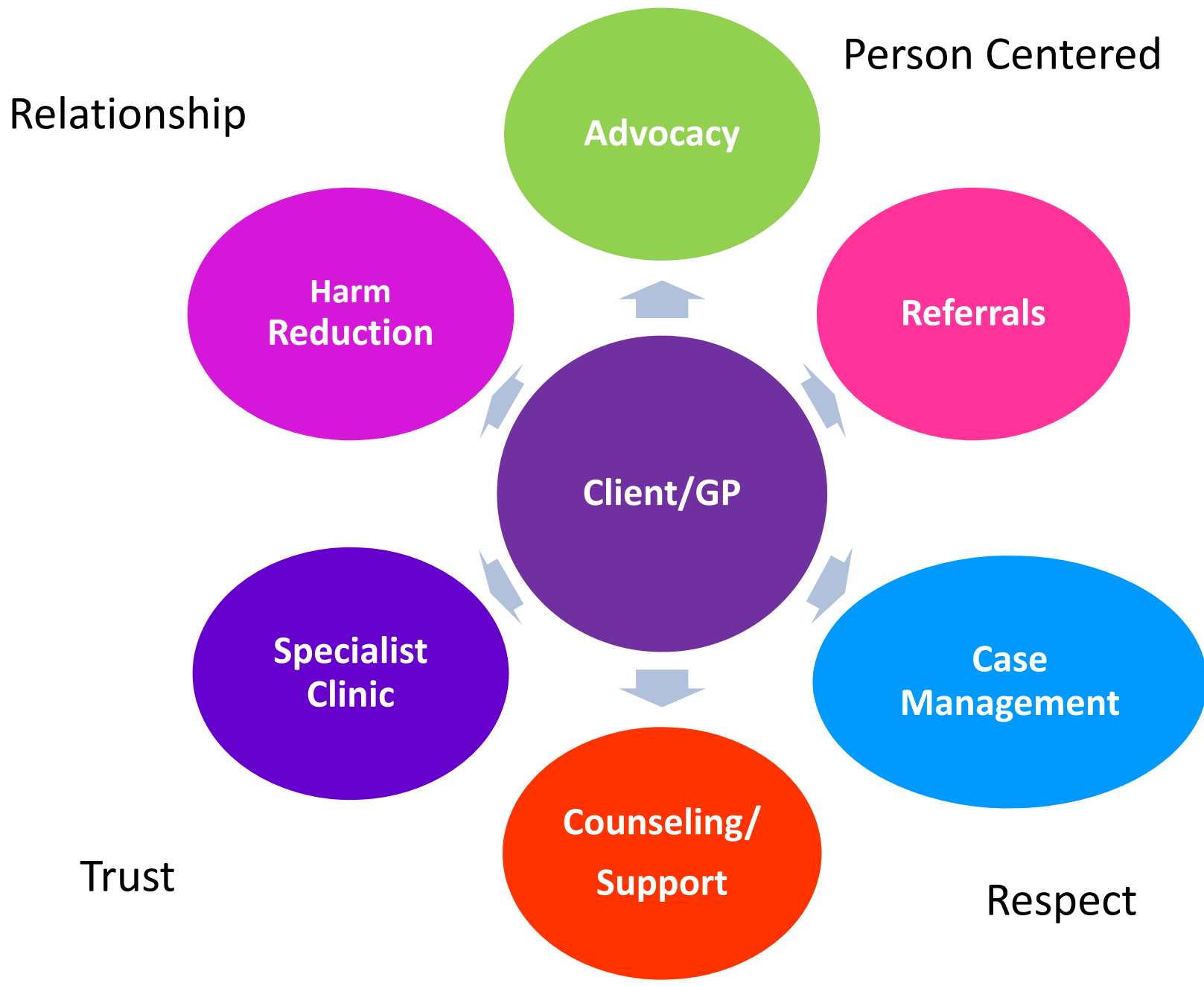
How can the silos be removed or at least a pathway between them be created?





# Issues related to a Hepatitis Diagnosis.....





# Dose Reductions, Early Discontinuation, Patient Withdrawal and Deaths

Figure 5

	APPROACH Study Academic Centres	APPROACH Study Community Centres	North Island Liver Services
<b>Total Treatment</b>	N= 133	N= 250	N= 218
<b>Total Completed Treatment</b>	51 (38.3)	128 (52.2)	164 (75.2)
<b>Dose Reduction</b>			
<b>Interferon</b>	6 (4.5)	11 (4.4)	33 (15.1)
<b>Ribavirin</b>	15 (11.3)	22 (8.8)	38 (17.4)
<b>Early Discontinuation from treatment</b>	82 (61.7)	122 (48.8)	54 (24.8)
<b>Non Responder</b>	Unknown	Unknown	21 (9.6)
<b>Lost to follow up</b>	Unknown	Unknown	0 (0)
<b>Patient Choice</b>	Unknown	Unknown	13 (5.9)
<b>AE's and/or lab abnormalities</b>	14 (10.5)	25 (10)	18 (8.2)
<b>Deaths</b>	0 (0)	2 (0.8)	2 (0.9)
<b>Unable to calculate SVR determination</b>			
<b>Lost to Follow Up</b>	14 (10.5)	26 (10.4)	3 (1.3)
<b>Deaths</b>	0 (0)	2 (0.8)	4 (1.8)

Data presented as N (%)

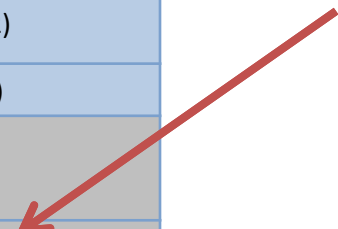
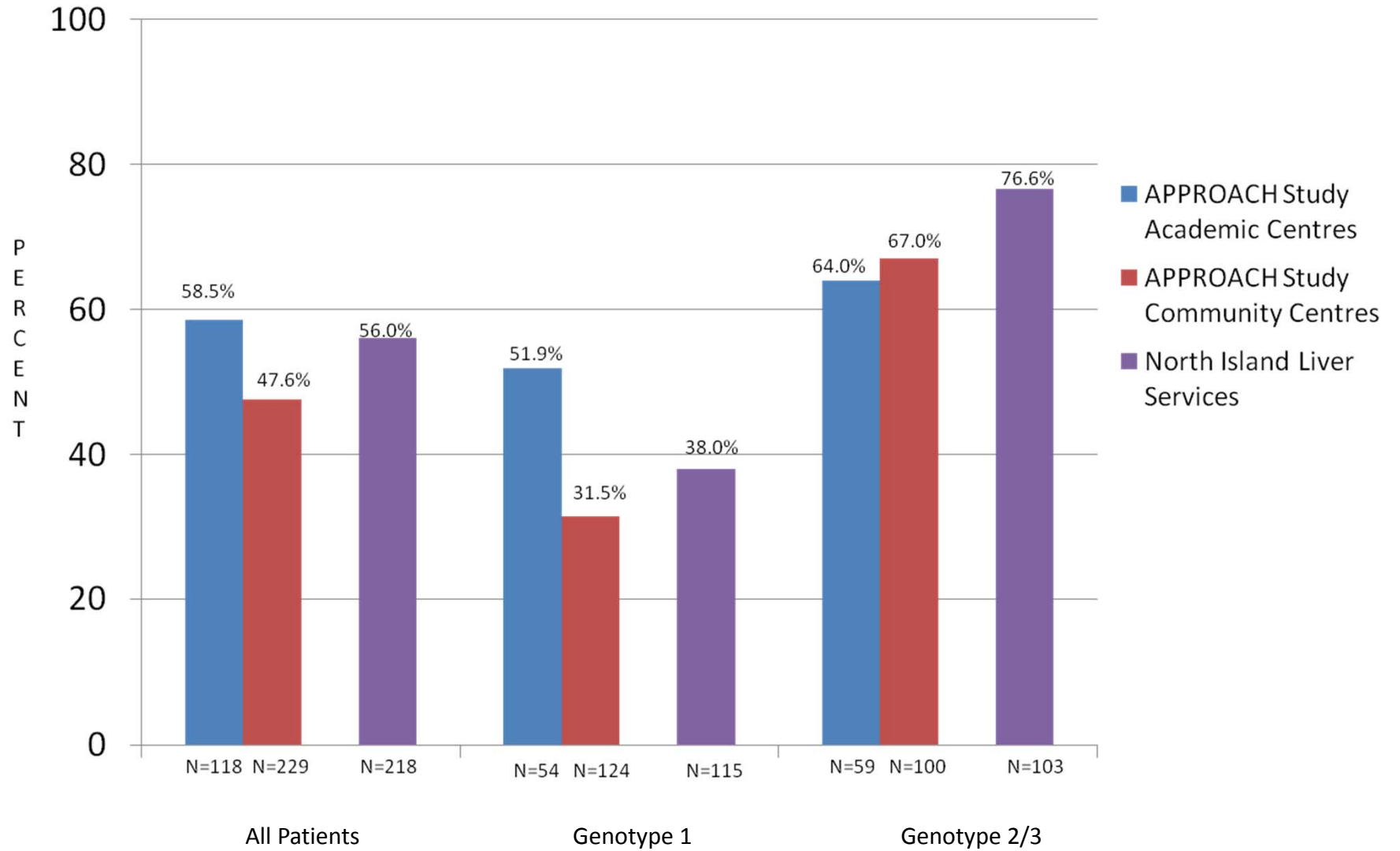
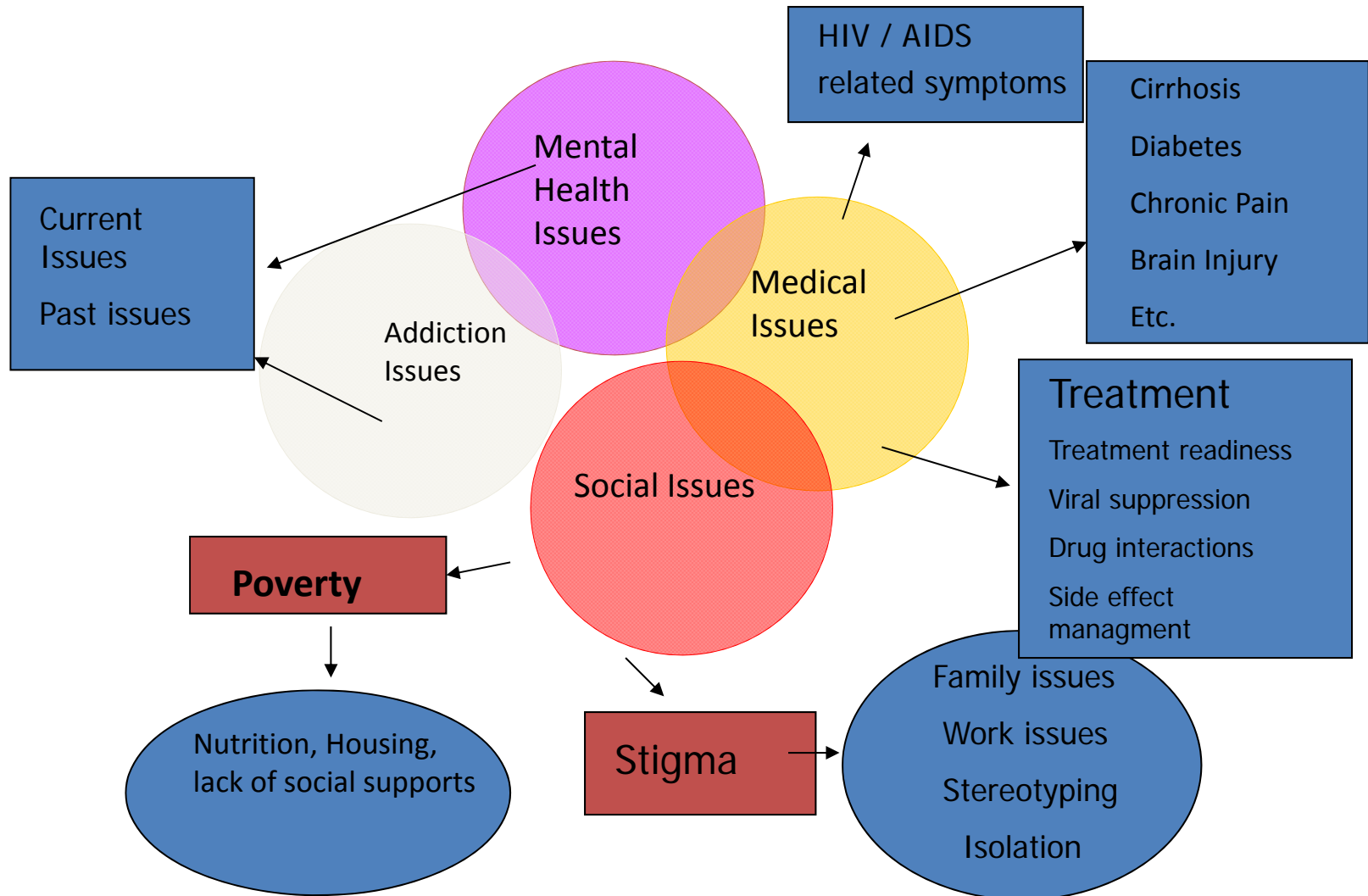


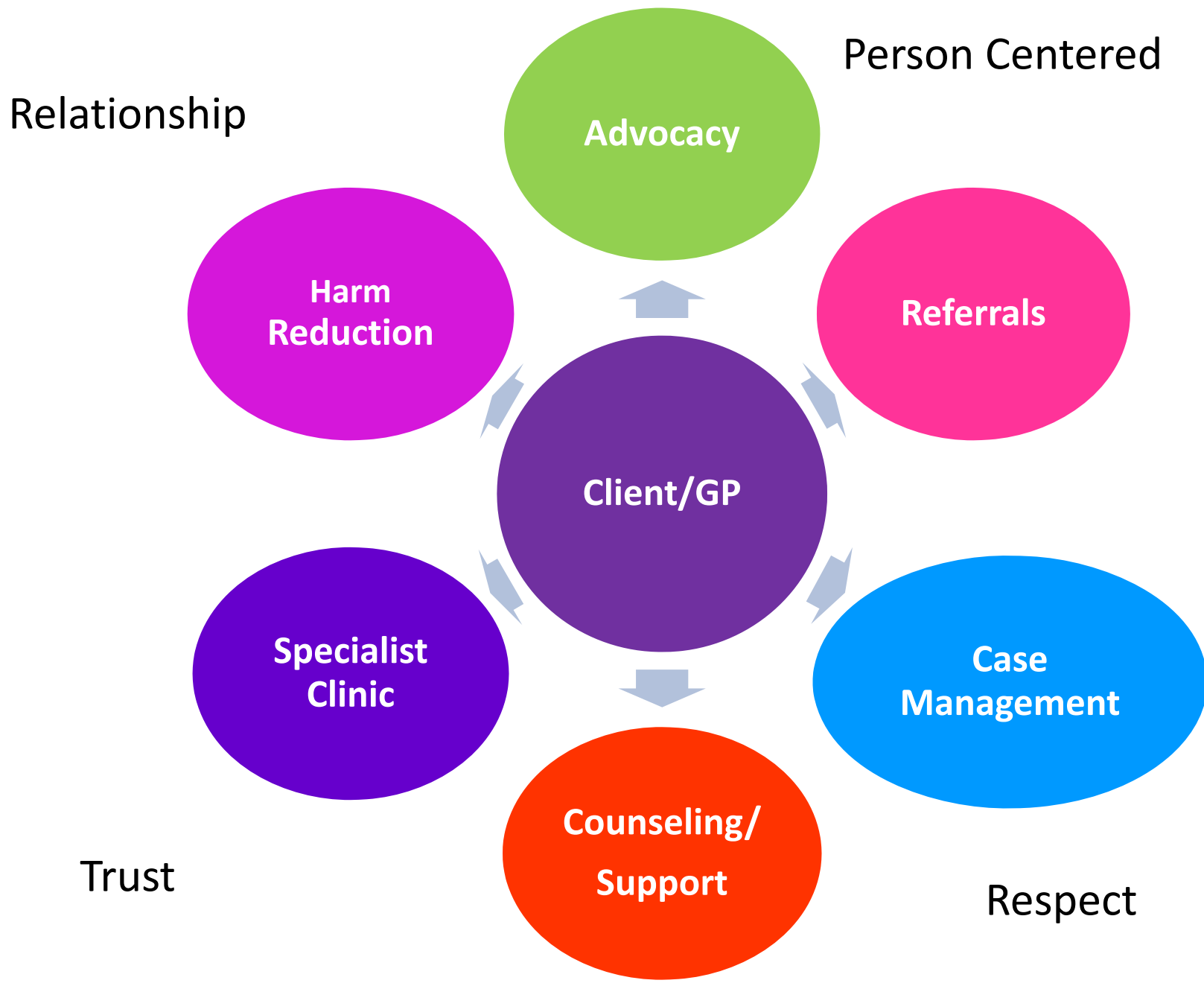
Figure 2

## Sustained virological response rates in treatment-naïve patients according to type of treatment centre



# Issues related to an HIV Diagnosis.....







## What is the North Island HIV Services?

We are a team of health care professionals working in association with your family physician/nurse practitioner and HIV specialist. We provide an integrated service of prevention, education, treatment and support related to HIV.



Take home Pearl !!

- Integration works!!!